



Sunstruck Installation Manual



Sunstruck comes in two crates, the smaller one contains the main base with computer and monitors
The larger contains the display panels

Tools needed:
3 people
Philips screwdriver
7/16 socket and ratchet
3/4 socket



Remove wing nuts and carriage bolts, then side panels.





Remove base unit containing the computer just as these hansom exhibit techs are doing. Place base unit where it will be displayed. Noting closest power outlet. Flat side to the Back, rounded side to the front.

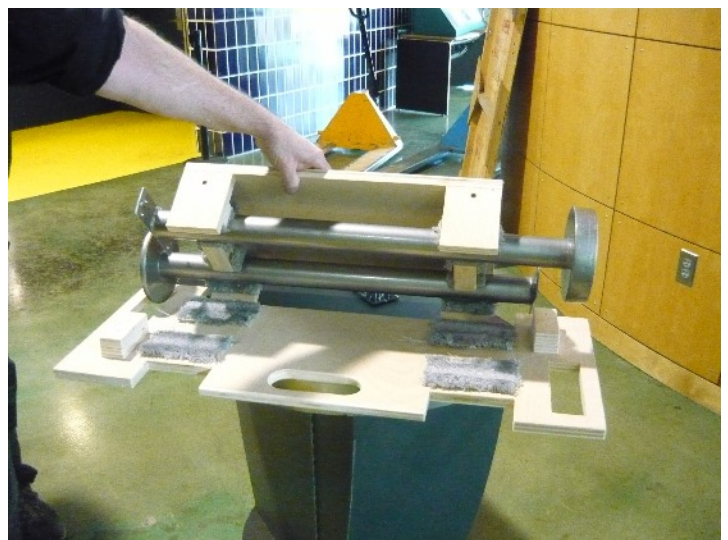


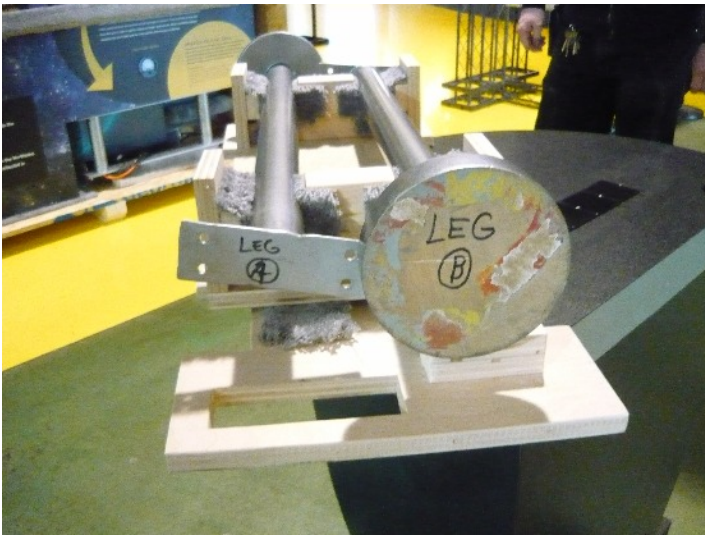
Using the key attached with Velcro underneath the top of the base, open front door, unstrap computer and remove. (There is also an extra key attached inside the crate on the left side.)



NOTE: Photo was taken before shelf and strap were installed

Remove support legs for two of the display walls, sled should just slide out





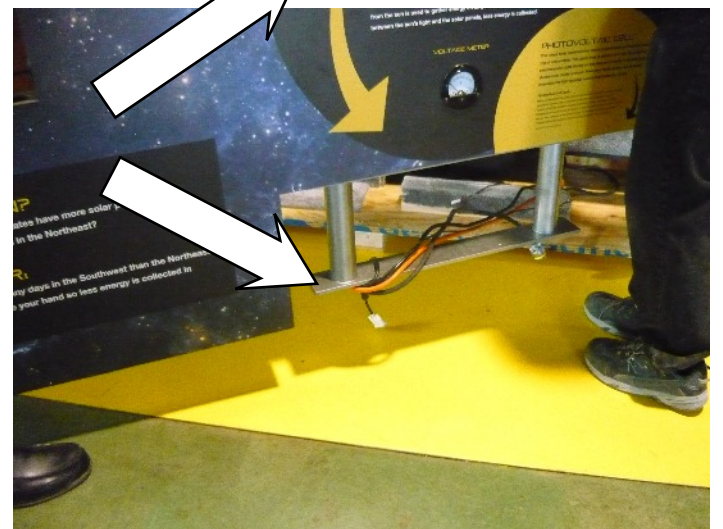
Legs are marked A and B



Remove wing nuts and supporting bar



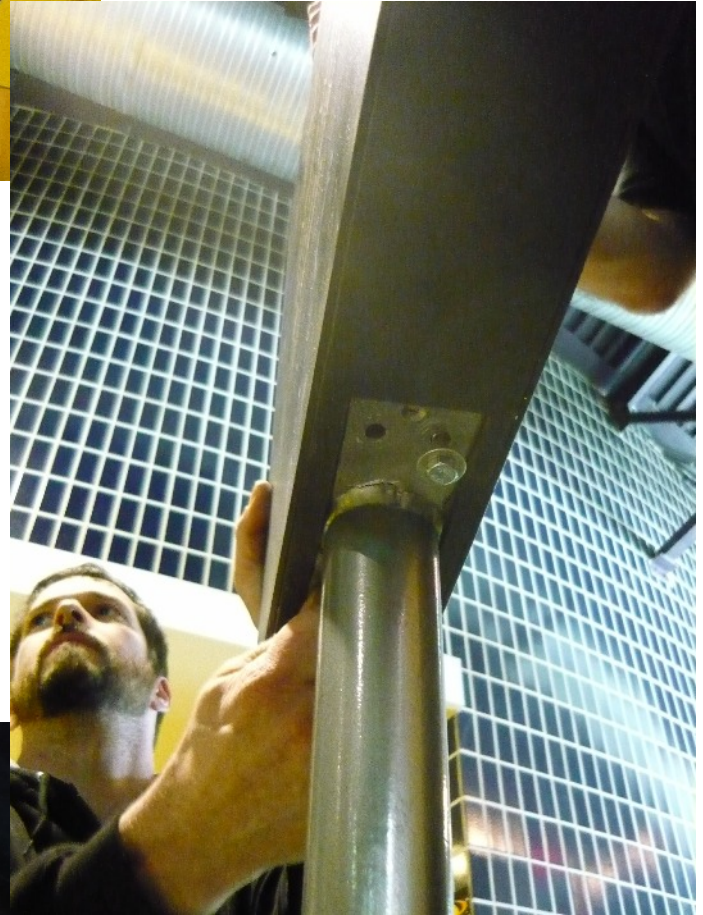
Remove Main panel as our hansom techs are doing here being careful of the cables that will connect the monitor, solar panels and power for the lights





Leg **B** attaches here

Laying panel down on a padded surface, (we found one of our carts we use here to be the perfect height) attach leg B to the bottom of the main display panel using 4- 1/4 lag bolts. Tighten with 7/16 socket and ratchet.

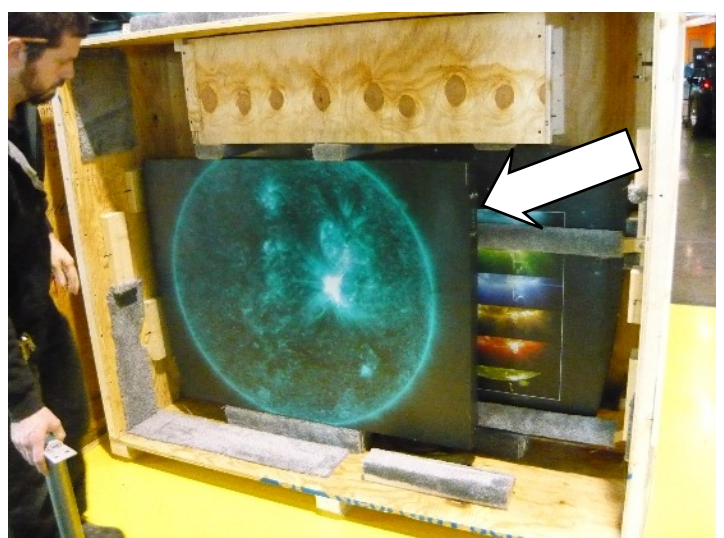




The hole in the base is for the wires to pass through. Using three people for this part, (one hansom tech Shown) two lift and the third feed wires through access hole. Locating pins in the locating holes .



While the one tech holds the main panel upright, the other two remove the next panel And prepare to install Leg A . NOTE: Panel is on its side in crate, pull it out and Install leg A in same way as leg B using 4- 1/4 in lags .

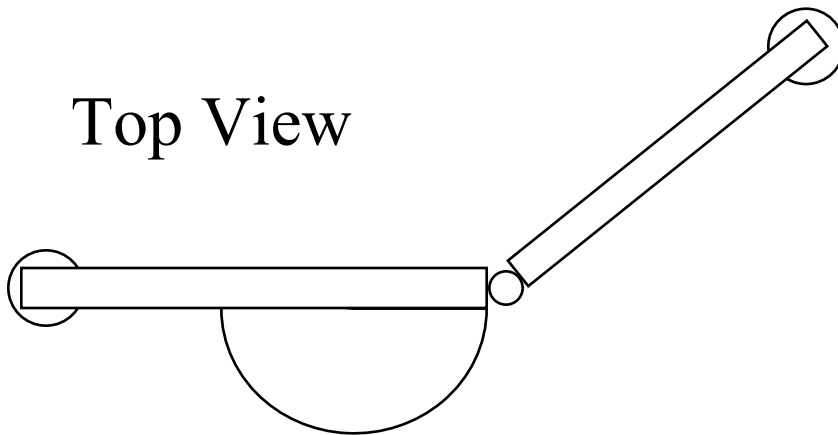


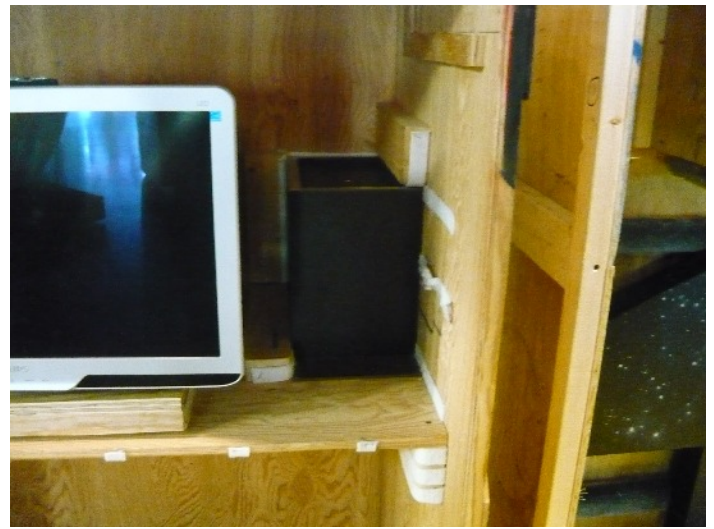
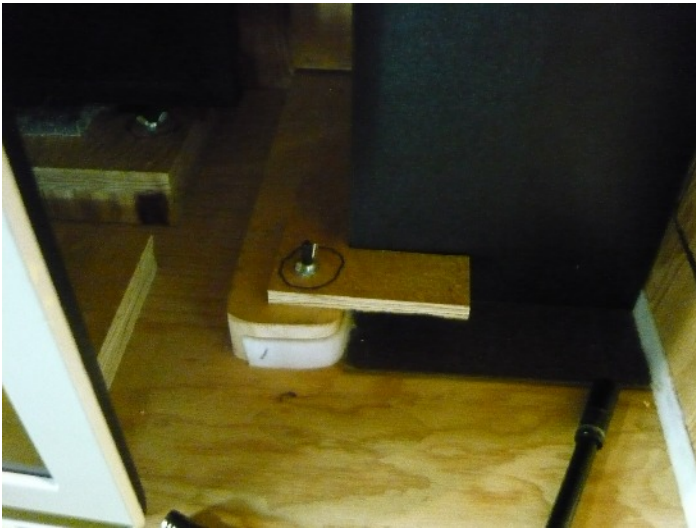


Lift panel and bring tabs
On side over the studs
On the main panel and
Orient back at a 45 deg
(or so) angle to stabilize
The main panel as shown
In top view.



Top View





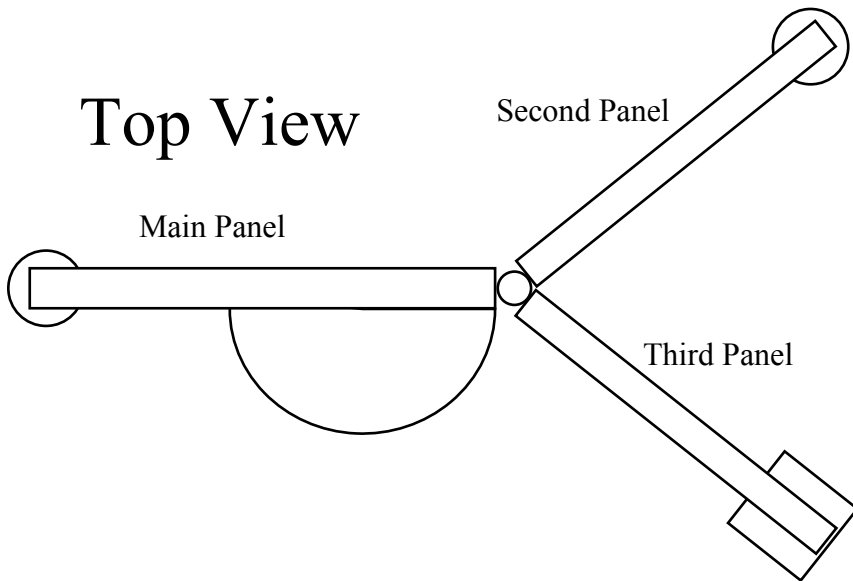
In the smaller crate, remove stop to access the base for the last panel.



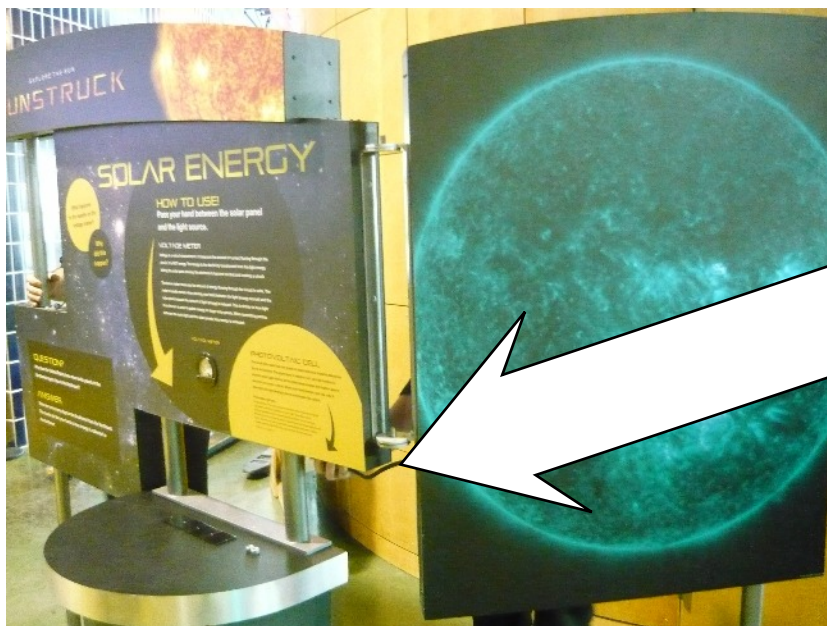
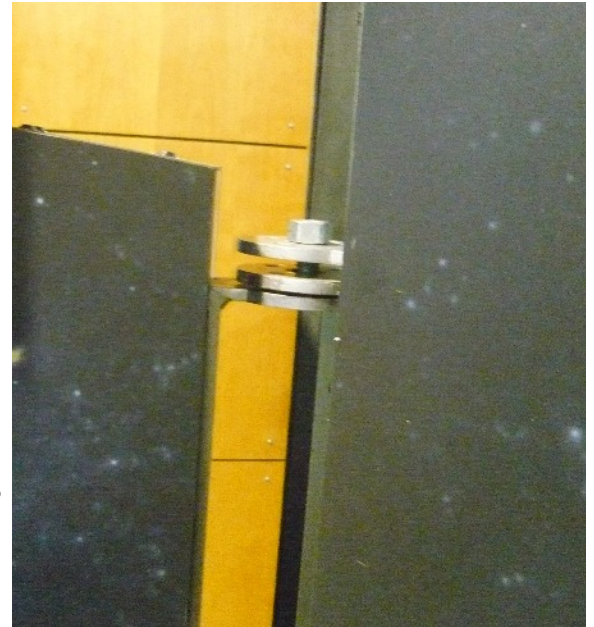
Remove wing nuts and retaining Bars to gain access to the last Panel.

Attach last panel in same fashion as before using the square box under outer portion of the panel and dropping tabs over studs. Keeping panel at a 45 deg (or so) angle to the Front as seen in top view on next Page.





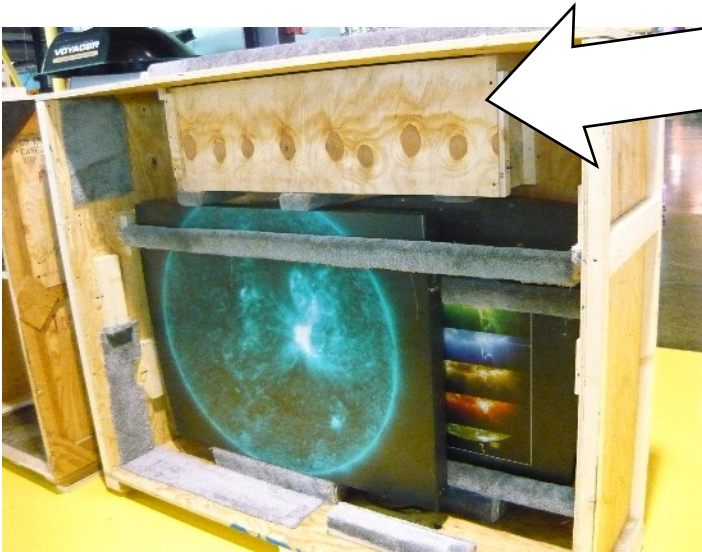
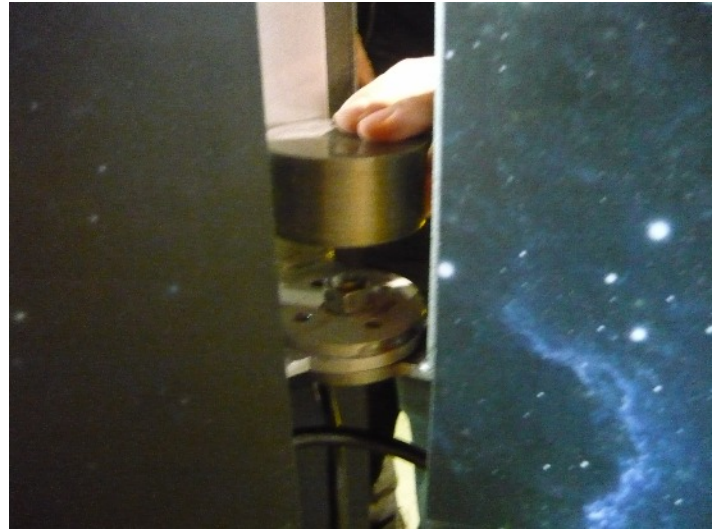
Install 2 nuts holding the wing panels
Using $\frac{3}{4}$ socket and ratchet



Panels 2 and 3 plug into the
bottom of the main panel

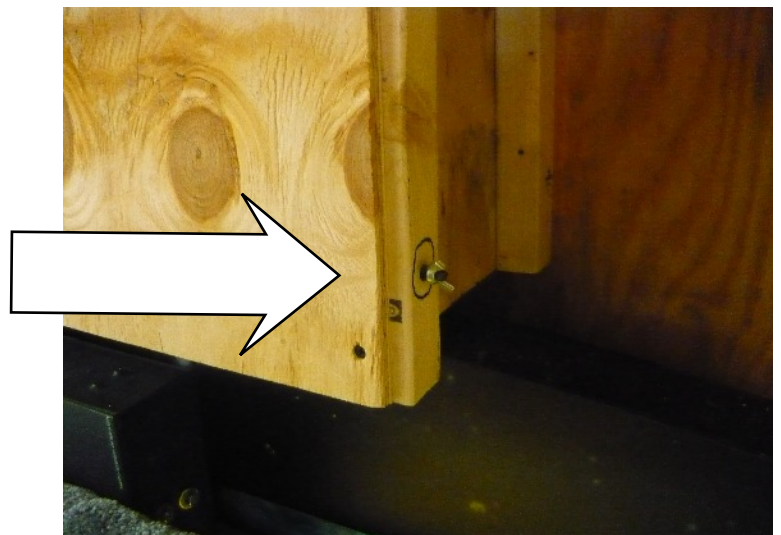
Located inside the large box are the
caps for the two nuts you just
tightened. Remove wing nuts to gain
access.





Inside the big box is a smaller compartment containing the lights

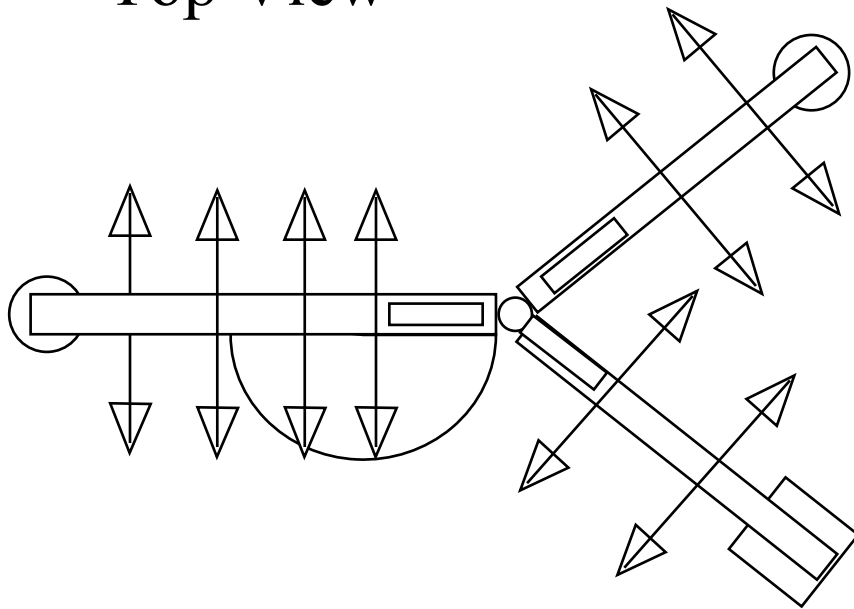
Remove the wing nuts and
Slide the cover to the right
To remove

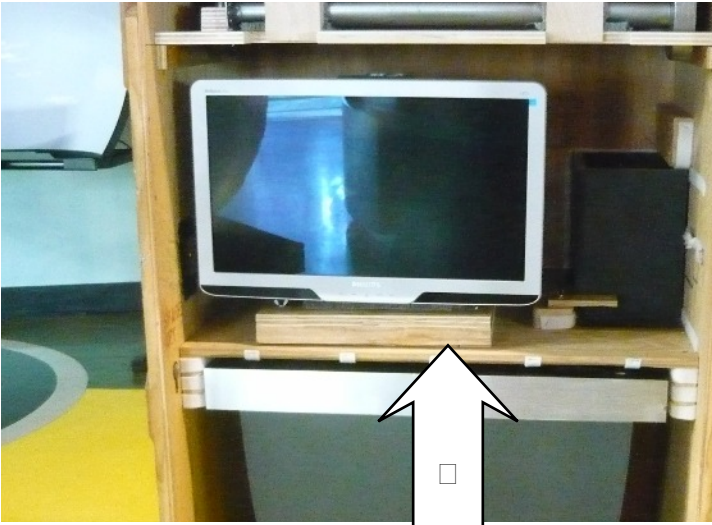




Remove lights and install with screws matching letters and numbers.
NOTE: The only difference is the length of the wires. Lights plug in In the top of the walls

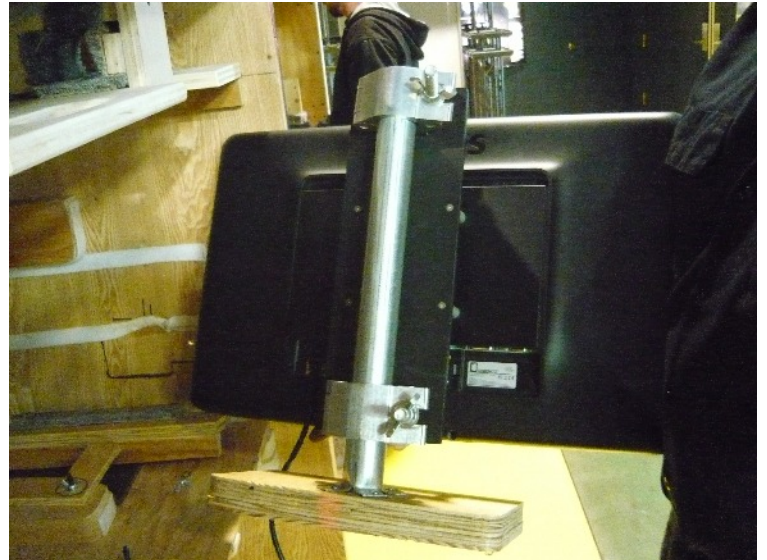
Top View





Remove tie down to free monitor stand

Remove 3D monitor with stand.
Open pole clamps and transfer
Monitor to main panel pole.





Plug monitor power into main panel and video cable into monitor



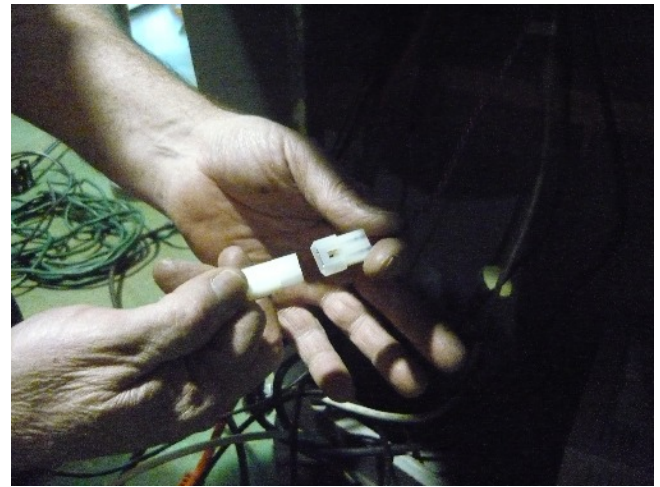
Next have your hansom (or beautiful) tech Install the wiring. Each wire should be labeled for easy identification





Monitor plugs into blue box, blue box plugs into computer

Molex plug for solar cells



And of course the obligatory Power strip to power everything up

Running your power cable out the back
Replace computer and power up.
During our use here we only shut down
the monitor at night, leaving the
Computer on.

