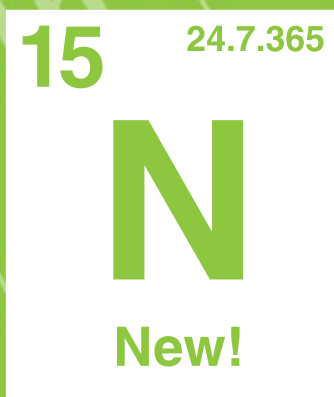


The Element of ...



What's *YOUR*
Element?



GROUP GUIDE

Fall/Winter 2016

www.Mi-Sci.org • Group Reservations: 313.577.8400, Option 5

The Michigan Science Center is a 501(c)(3) nonprofit organization.

GROUP PACKAGES

Please refer to pages 2–4 for add-on packages.

Discovery

Designed for grades 1–12, ages 6–18

Curiosity Basic - \$9

Creatures of Light
Hands-on Exhibits

Wonder Plus - \$12

4 hour visit suggested

Creatures of Light
Hands-on Exhibits
+ Pick 1:
Sparks Theatre
IMAX® Dome Theatre
Planetarium Show
Spark!Lab Reserved
Learning Lab
Stage Show

Ultimate Discovery - \$14

5 hour visit suggested

Creatures of Light
Hands-on Exhibits
+ Pick 2:
Sparks Theatre
IMAX® Dome Theatre
Planetarium Show
Spark!Lab Reserved
Learning Lab
Stage Show

Tiny Tots

Designed for grades PreK–K, ages 3–5

Tiny Tots Basic - \$5

Kids Town Program
Hands-on Exhibits

Tiny Tots Plus - \$9

2 hour visit time suggested

Kids Town Program
Hands-on Exhibits
Creatures of Light

Tiny Tots Ultimate - \$12

3 hour visit suggested

Kids Town Program
Hands-on Exhibits
Creatures of Light
+ Pick 1:
IMAX® Dome Theatre
Planetarium Show

*Teachers receive free general admission with an educator ID.
Visit us to plan your trip before you bring your class!*

MiSci General Admission group rates start at \$6 per student. Call for further information regarding having your group trip sponsored

New This Year!

School Special Experiences — Available for grades K–8. This is a pre-set experience that navigates students throughout MiSci to accomplish an objective for the day. These field trips are only offered on particular days, which are listed at www.Mi-Sci.org/educators.

Engineering Design — Students engage in engineering practices as they design various projects to solve a real world problem. The trip is focused on group work, designing solutions and optimizing the design for efficiency.

Test Prep — With active student participation, our staff will perform live experiments in chemistry, math, life and physical sciences. Students will also have access to a fun audience response session to simulate performance tasks.

SHOWS, PROGRAMS & LIVE DEMOS

Our educators and presenters make learning fun with demonstrations and shows that bring science to life! Space reservation is required for groups.

All demonstration and stage show areas are subject to availability.

Chrysler IMAX® Dome Theatre

Showing films that entertain, educate and inspire, Michigan's only domed IMAX® Theatre surrounds audiences with an experience that thrills students and adults alike.



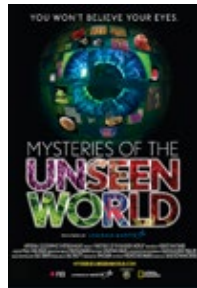
Featured Films:



National Parks Adventure

Grades 3–12

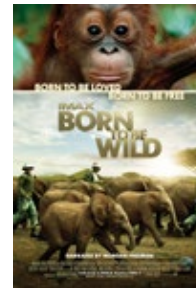
Explore America's awe-inspiring great outdoors.



Mysteries of the Unseen World

Grades 2–12

Observe places that you have never seen before and see things beyond your normal vision.



Born to be Wild

Extraordinary people rescue and save endangered species one life at a time.

Opens October 2016

Don't see what you're looking for? We let school groups choose what we play once a day! School choice films include: Humpback Whales, Titans of the Ice Age, Dolphins, Mysteries of the Great Lakes, and Animalopolis. For more information about scheduling a school choice film, please call 313.577.8400, option 5.

Dassault Systèmes Planetarium

Grades PreK–12

Go inside a virtual universe as you fly past 9,000 stars, planets, galaxies and more. Our shows are led by a live presenter and are followed by question and answer sessions. *Shows last approximately 50 minutes.*

Chrysler Science Stage Show

Grades PreK–12

Join our performers as they conduct thrilling educational programs and presentations for all ages! *Shows last approximately 20 minutes.*

DTE Energy Sparks Theater

Grades PreK–12

Enter our amazing Faraday cage and witness the incredible "hair-raising" Sparks Electricity Show! As performers demonstrate how electricity affects the world in all forms through electromagnets, static electricity, plasma and exploring different states of matter. *Shows last approximately 30 minutes.*

Spark!Lab **NEW!**

Grades PreK–12

This is the perfect space for engineering design! Through hands-on activities and interactions with facilitators, students engage in the process of invention. This interactive space creates an environment that supports the creative and collaborative thinking so important to invention and entrepreneurship.

GROUP ADD-ONS

Grades PreK–2

Learning Labs

Add a Learning Lab to your visit and take students on an in-depth exploration of STEM principles.

What's the Property? — Travel around our hands-on stations as you test your five senses in order to sort, classify, and measure objects according to their similar and observable properties.

From Seed to Flower — Explore the life cycle of plants and their basic needs as you plant a seed to take home.

Wondrous Weather — Put on your meteorologist hat as you learn about weather patterns and the tools used to predict them.

Recommended Planetarium Shows

PreK – Grade 1

Stories in the Sky — This interactive show is meant for our youngest guests. Learn about the rotation of the Earth, light pollution, our animal friends in the night sky and the stories that go along with them.

Grade 2

What's Up? Your Guide to the Night Sky — Discover the constellations, stars, and planets in the current season along with the latest news on astronomy and space.

Recommended IMAX® Show

Born to be Wild — Extraordinary people rescue and save endangered species one life at a time. Opens in October of 2016.



Kids Town

Grades PreK–Kindergarten

Imagine a place where pint-sized scientists can be veterinarians, test the laws of physics in a field house, learn about mixtures and solutions in the kitchen of their very own diner, or just splash, crawl and play. That place is Kids Town, a gallery for children ages 5 and under.

Kids Town features engaging activity areas organized into a child-scaled “town” where young scientists can develop their social and motor skills while exploring basic science concepts we encounter every day.

In keeping with the guidelines of the Michigan Board of Education Early Childhood Standards of Quality for Prekindergarten, our gallery uses active, hands-on experiences to foster positive attitudes toward science and build a foundation for later and more sophisticated learning.



GROUP ADD-ONS

Grades 3–5

Learning Labs

Add a Learning Lab to your visit and take students on an in-depth exploration of STEM principles.

Survival of the Fittest — Learn how favorable traits add to an organism's ability to survive and thrive in its environment. How do your characteristics differ from animals?

Lakes Everywhere — The Great Lakes are Michigan's literal defining feature, giving the region its cookie cutter shape. Explore this ecosystem and the impact it has on our lives.

Laser Mazes — Reflect and redirect light as you focus in on a mirror maze challenge!

Recommended Planetarium Shows

Junior Astronomer — Explore the patterns in the cosmos including the phases of the moon, the reason for the seasons, and current constellations in the night sky.

Please refer to page 2 for IMAX® listings.

Grades 6–8

Learning Labs

Add a Learning Lab to your visit and take students on an in-depth exploration of STEM principles.

The Human Element — Discover how humans affect the environment and alter populations through the use of land and other resources.

The Air Around Us — What is the composition of the atmosphere around us and how does it affect the weather? Use real data from NOAA to learn how atmosphere levels affects our lives.

Gravity Games — Discover the patterns within our solar system as you help demonstrate the relationship between the sun, earth, and moon.

Recommended Planetarium Shows

Our Place in Space — This show begins with a look at the state of Michigan and gradually zooms out to reveal the size of asteroids and dwarf planets when compared to our state. The journey continues with a view of the planets of our Solar System, the Sun, the Milky Way galaxy, and finally the scale of the Universe. Join us for this humbling look at the true size of our planet.

Please refer to page 2 for IMAX® listings.

Grades 9–12

Learning Labs

Add a Learning Lab to your visit and take students on an in-depth exploration of STEM principles.

Translating the Message — Try your hand at DNA extraction and learn how DNA transcription determines heredity and genetic traits.

Drawn to the Center — Discover how figure skaters can control the speed of their spins and why people don't fall off spinning rides.

The Element Family — Conduct chemistry experiments and learn why the elements on the periodic table are arranged by groups and periods.

Recommended Planetarium Shows

Sunstruck — Discover the wonders of our sun. Its incredible energy has supported life on earth for millennia, but is now threatening our technology and way of life. Travel to the distant future to discover our sun's connection to the universe's cosmic cycle of life and death.

Please refer to page 2 for IMAX® listings.

Group Reservations: 313.577.8400, Option 5

EDUCATOR RESOURCES

Traveling Science

Bring MiSci to you! Our Traveling Science educators bring engaging science workshops, group presentations and experiences to your school or event that will inspire learners to explore and appreciate science. The content of our workshops and presentations is aligned to classroom curriculum. Since opening, Traveling Science has impacted over 200,000 curious minds across Michigan.



Hands-on Workshops

MiSci educators visit your classroom to introduce or reinforce topics in your curriculum. We cover physics, DNA and everything in between. Workshops are designed for classes up to 30 students and last approximately 45 minutes.

Group Presentations

Assemblies are a great way to engage and educate groups of up to 250 students. Large scale science demonstrations from combustion to liquid nitrogen will wow the crowd and leave them wanting more!

Science Festivals

Host a science festival during the day for the entire school or in the evening for a fun family event. We supply all the materials and training for engaging hands-on activities, and you supply the volunteers!

Contact our Outreach Coordinator at Outreach@Mi-Sci.org or call 313.577.8400, ext. 238, for additional information and reservations.

Professional Development

Our team of educators offer professional development training for K–8 teachers! All workshops focus on inquiry-based learning processes and the development of critical thinking skills! Join our **Educator Extra** mailing list and learn more about special professional development opportunities throughout the school year! To join, visit mi-sci.org/educators and complete the form.

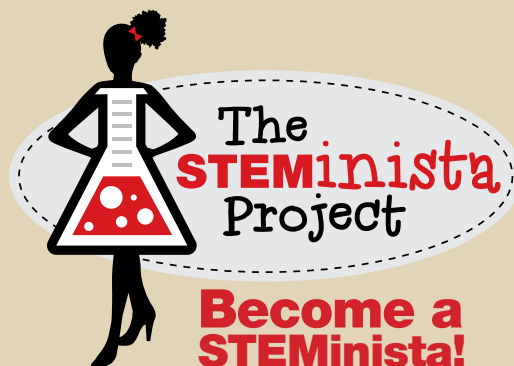
Super Sparks

MiSci has designated October for adaptive science activities through the offering of special programs:

October 5-9: Deaf/Hard of hearing
October 12-16: Sensory Friendly
October 19-23: Vision Impaired
October 26-30: Mobility Week

Scouts

The Michigan Science Center offers a full array of scouting programs and overnight adventures for both boys and girls. Check our website for new Scout programs for the 2016-2017 school year!



Join today at Mi-Sci.org/STEMinista-project

MICHIGAN STANDARDS ALIGNMENT

The following standards are introduced in the below films and programs. To further your students' educational exploration, we recommend booking programs with related standards.

PreK–2nd

Standard	What's The Property	From Seed To Flower	Wondrous Weather	Stories in The Sky	What's Up?
Physical Science					
2-PS1-1					
2-PS1-2					
Life Science					
K-LS1-1					
1-LS3-1					
2-LS2-2					
2-LS4-1					
Earth & Space Science					
K-ESS2-1					
K-ESS3-1					
K-ESS3-2					
K-ESS3-3					
1-ESS1-1					
1-ESS1-2					

Middle School

Standard	The Human Element	The Air Around Us	Gravity Games	Our Place In Space
Life Science				
MS-LS2-5				
Earth & Space Science				
MS-ESS1-1				
MS-ESS1-2				
MS-ESS1-3				
MS-ESS2-5				
MS-ESS2-6				
MS-ESS3-2				
MS-ESS3-3				
MS-ESS3-4				
MS-ESS3-5				
Engineering Design				
MS-ETS1-1				
MS-ETS1-2				
MS-ETS1-3				

3rd–5th

Standard	Survival of the Fittest	Lakes Everywhere	Lazer Mazes	Junior Astronomer
Physical Science				
3-PS2-2				
4-PS3-2				
5-PS2-1				
Life Science				
3-LS3-1				
3-LS3-2				
3-LS4-1				
3-LS4-2				
3-LS4-3				
3-LS4-4				
Earth & Space Science				
4-ESS1-1				
4-ESS2-1				
4-ESS2-2				
4-ESS3-2				
5-ESS1-1				
5-ESS2-1				
5-ESS2-2				
5-ESS3-1				
Engineering Design				
3-5-ETS1-1				
3-5-ETS1-2				
3-5-ETS1-3				

High School

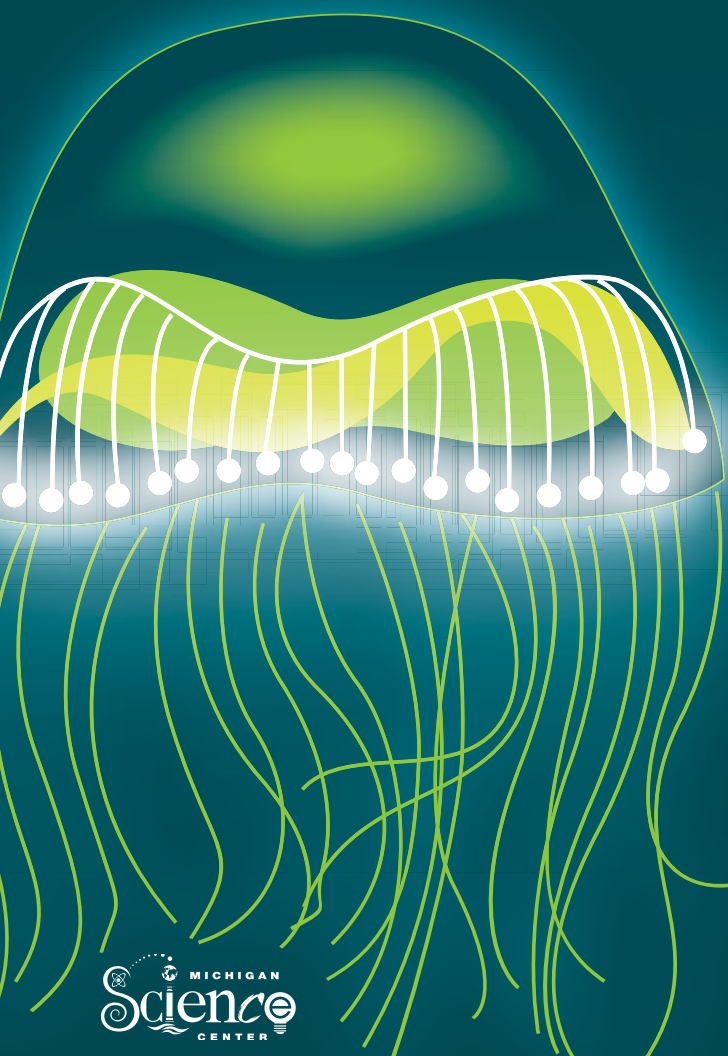
Standard	Translating The Message	Drawn to the Center	The Element Family	Sunstruck
Physical Science				
HS-PS1-2				
HS-PS2-1				
HS-PS3-2				
Life Science				
HS-LS1-1				
HS-LS1-4				
HS-LS3-1				
HS-LS3-2				
HS-LS3-3				
HS-LS4-3				
Earth & Space Science				
HS-ESS1-1				
HS-ESS1-2				
HS-ESS1-3				



5020 John R Street
Detroit, MI 48202

NONPROFIT ORG.
U.S. POSTAGE
PAID
DETROIT, MI
PERMIT NO. 884

The Michigan Science Center is a 501(c)(3) nonprofit organization.



WHO
TURNED
OFF
THE
DARK?

CREATURES OF **LIGHT**

NATURE'S BIOLUMINESCENCE
SEPTEMBER 24 - JANUARY 15
BOOK YOUR TRIP TODAY!

